



Managing Your Waste and **Recycling** in Dauphin County



Introduction

The Dauphin County Solid Waste Management & Recycling department is guiding the way for waste management within the county. We are dedicated to helping Dauphin County prosper with waste disposal options for residents and businesses. Our educational programs, including our recycling mascot, promote our environmental ideology to businesses, schools and the public. Recycling and preferable environmental practices should be habitual, and Dauphin County has several programs in place to reach that goal.

Our department implements and enforces the Dauphin County PA-Act 101 Municipal Waste Management Plan.

Recycling 101:

Pennsylvania's
Act 101 of 1988

**MUNICIPAL
WASTE
PLANNING,
RECYCLING, AND
WASTE
REDUCTION ACT**



- ✓ Requires larger municipalities to offer curbside recycling programs to residents and businesses.
- ✓ Established a statewide fee on waste disposal to fund municipal recycling programs.
- ✓ Requires each County to develop a Municipal Waste Management Plan and update them every ten years.



RECYCLABLE MATERIALS REQUIRED FOR COLLECTION BY PA ACT 101 OF 1988

**Mandated municipalities are required to collect a minimum of three(3) materials from the list of eight(8).

- ♻ Aluminum
- ♻ Steel & Bimetallic (tin) Cans
- ♻ Plastics (#1 to #7)
- ♻ Clear Glass
- ♻ Colored Glass
- ♻ High-Grade Office Paper
- ♻ Newsprint
- ♻ Corrugated Cardboard

Curbside Recycling

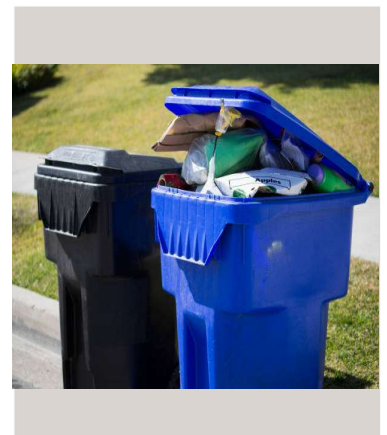
Many municipalities in Dauphin County have municipal waste collection contracts that include curbside recycling collection programs; some municipalities are mandated to offer curbside recycling by Act 101, and some do so by ordinance or simply by freewill.

For those municipalities without curbside recycling, the County operates eight drop-off locations for residents.

Curbside recycling programs vary from municipality to municipality, even within the same county. The variations are based on:

1. The municipality's population, size, and density.
2. The mix and quality of recyclable materials within that community.
3. PROXIMITY TO RECYCLING MARKETS (A BIG ONE!)
4. Funding and staffing levels to operate recycling

programs.



Localized Recycling

Every municipal recycling program is unique to that community.

- **THE COLLECTION SYSTEM**
 - Does the hauler or municipality provide the recycling container?
 - Is your recycling bin to be placed at a specific location for collection?
- **ACCEPTABLE MATERIALS**
 - All programs are influenced by national commodity trends and adjustments to programs are made accordingly.
- **LOCAL ORDINANCES**
 - Municipalities and counties can adopt ordinances to mandate the acceptable materials included in their collection programs. Specifically, Act 101 required materials.



Why can't we all recycle
the same stuff?

- ♻️ Recycling collection is often changed when modifications are made to the collection, processing, or commodities market.
- ♻️ Recycling program sustainability requires regular evaluation and adjustment to meet the ever-changing needs of the recycling commodities market.
- ♻️ Demand for recyclable materials continuously changes with the national and global industry trends, economic fluctuations (such as a recession), and consumer preferences.
- ♻️ For a material to be recyclable, there must be a demand for the material and a cost-effective way to transport and transform it into a new product.
- ♻️ Many recycling programs struggle to find markets for certain materials, such as glass.
- ♻️ Location-location-location! Communities with access to recycling markets with specialized sorting equipment can recycle more materials, than per se, a rural community.



Recycling isn't "FREE"

Recycling is simply another method of handling your waste and unwanted materials – and it's not free.

It's obvious that anytime you're able to recycle a material into a new product it is better for the environment.

However, there are MANY costs associated with the process of recycling; from the point of collection to the creation of the new product.

- \$ Collection labor and vehicle maintenance
- \$ Cleaning, sorting, storing and transporting recyclable materials to market end-users
- \$ Processing items into new materials

And MANY other variables such as insurance, etc.



And don't forget...

Recycling isn't *free* to you, either!

A lot of residents don't realize that they pay to recycle at their home.

Some waste management haulers do not itemize the services on their invoices.

You can contact your municipality or local hauler to inquire.



Drop-Off Recycling

For those municipalities without access to a curbside recycling program and for residents that recycle in addition their curbside program, the County operates eight drop-off locations for its residents.

DROP-OFF LOCATIONS:

Dauphin County Recycling Center
Conewago Township Municipal Building
Gratz Borough Community Center
Halifax Borough
Highspire Borough
Lykens Borough
Millersburg Borough
Williamstown Borough/Williams Township

WE RECYCLE:

- ♻️ Corrugated Cardboard
- ♻️ Newspaper
- ♻️ Magazines
- ♻️ Aluminum & Bi-Metal Cans
- ♻️ Plastic containers #1, #2, and #5





WHERE DOES THE DROP-OFF RECYCLING GO?

**Corrugated Cardboard,
Newspaper, Magazines and
Office Paper –**

Federal Recycling, Harrisburg

Plastics #1, #2, and #5 –

Penn Waste, Manchester, York Co.

Aluminum & Bi-Metal Cans –

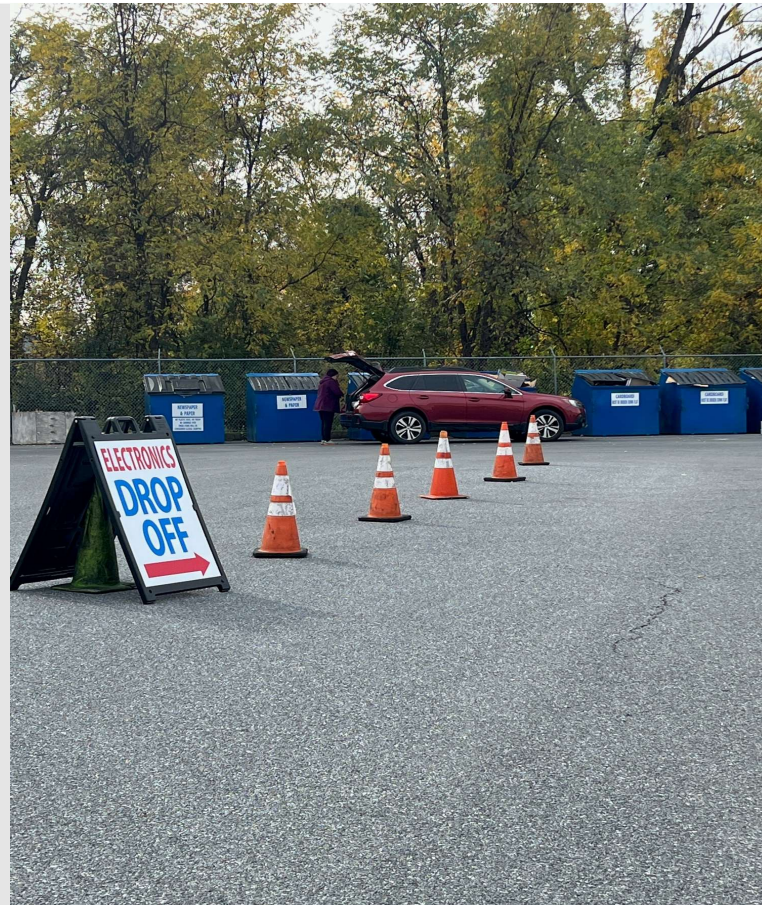
Consolidated Scrap Resources,
Harrisburg

Electronics Recycling

PENNSYLVANIA'S COVERED DEVICE RECYCLING ACT

Act 108 of 2010, requires manufacturers to provide recycling programs for desktop computers, laptop computers, computer monitors, computer peripherals and televisions sold to consumers in Pennsylvania.

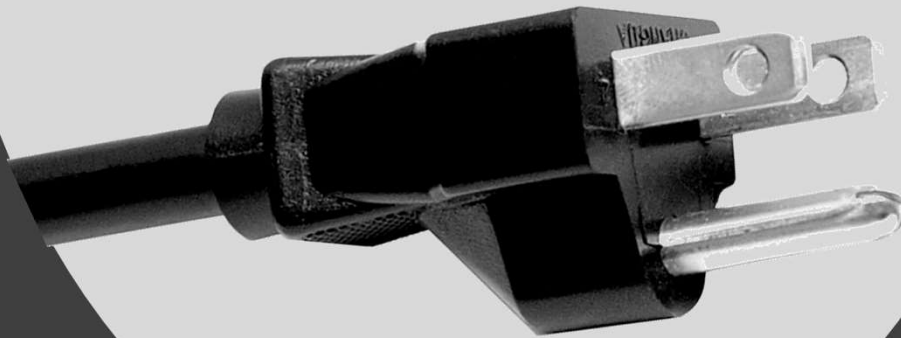
Other requirements may also apply.



Common e-Waste Misconceptions



Just because it's ELECTRIC, doesn't make it ELECTRONIC

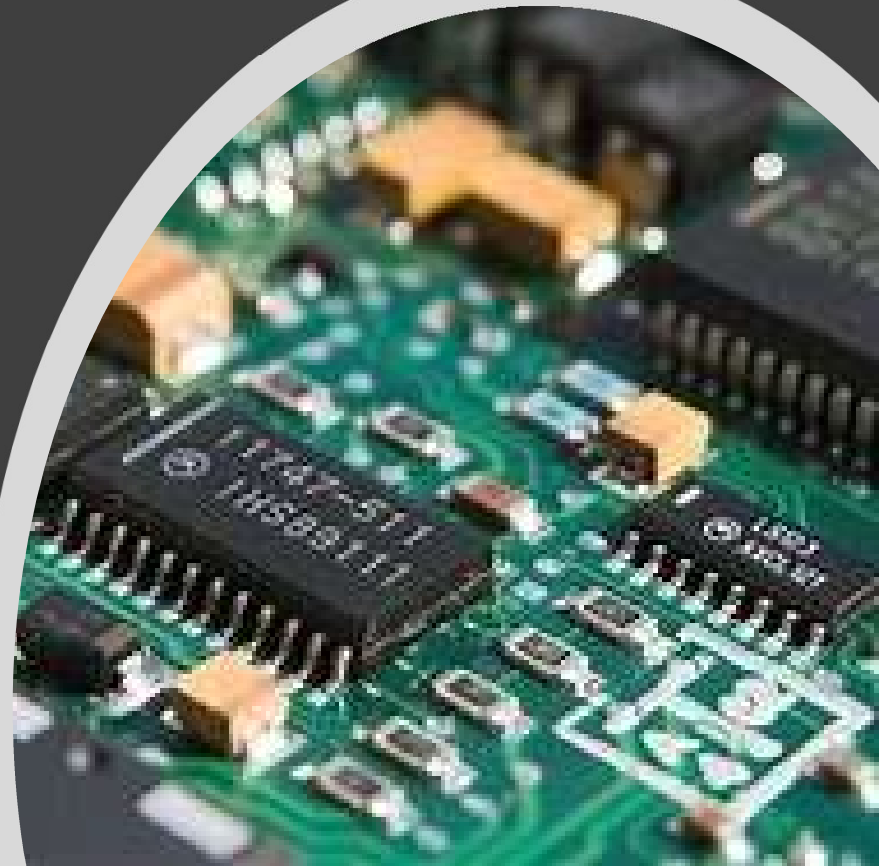


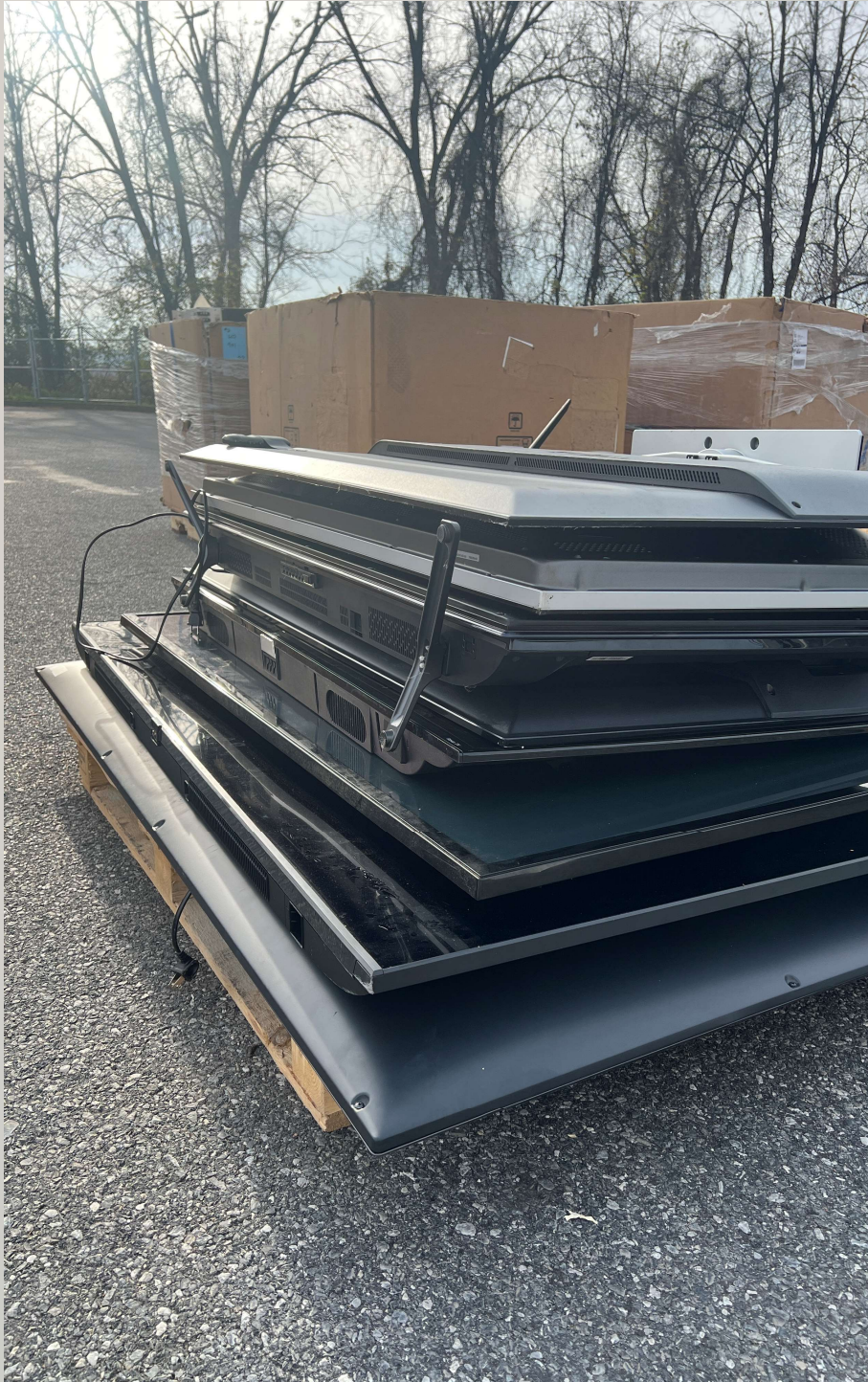
A common theme we find at the Recycling Center are good people, with good intentions, wish-cycling any and all items that have a plug.

Typically, if something uses electricity merely as energy, it is **electrical**.

If it uses electricity as the medium for manipulating information, it is almost surely **electronic**.

Electrical and Electronic devices are comprised of different but overlapping categories but, in short, all electronic devices are also electrical devices, it is a subset.





Electronics accepted at the Dauphin County Recycling Center

- Televisions
- Computers – CPU/Monitor/Cabling
- ALL Computer Peripherals
- Laptops
- Cell Phones
- Tablets/e-Readers
- Printers
- VCR/DVD Players
- Networking Equipment

**Basically, any electronic device prohibited from disposal under Act 108 of 2010 (CDRA)

Other than electronics,
what is accepted for
recycling at DCRC?



FOR FREE

- ✓ Large Household Appliances (microwaves, dishwasher, washer/dryer, etc.)
- ✓ Polystyrene (“Styrofoam”)
- ✓ Mercury Thermostats (ONLY!); no elemental mercury or other mercury containing devices will be accepted at our center.





FOR A FEE

- Refrigerators = \$20 p/unit
- Freezers = \$20 p/unit
- Dehumidifiers = \$20 p/unit
- Air Conditioners = \$20 / unit

**Examples, but not limited to the aforementioned. Any appliance requiring refrigerant recovery is \$20 p/unit

- Paper Shredding = \$5 p/box (or bag)

SENIOR SHREDDING

The Dauphin County Recycling Center provides free document shredding for adults 60 years of age and older.

- Wednesdays by appointment
- 2 box / bag limit
- Dauphin County residents only

Call our department to schedule.

717.982.6772





Where are
we located?

1625 S. Cameron Street, Harrisburg

717.982.6772

HOURS OF OPERATION:

Monday – Friday, 8:30AM to 4:15PM



“Wish-cycling”



What is “Wish-cycling”?

Wish-cycling is **the practice of recycling items that cannot be recycled**. It stems from the best intentions. You wish or hope that something you’ve bought or use regularly can be recycled. Instead, your good intentions end up costing recycling companies more time and money.



Plastic Shower
Curtains



Bubble Wrap



Plastic Toys



Paper Cups



Books

Acting on those good intentions can do a lot of harm. The best-case scenario is that recycling facility workers separate out the items that must be discarded as trash, which costs the materials recovery facility (“MRF”) time and money.



A worst-case scenario is equivalent to throwing a **red marker** into a load of white laundry. When hard-to-recycle items enter the recyclable material stream at a processing facility, they can contaminate the other recyclables, rendering the entire load void.



Wish-cycling can also damage expensive processing equipment, such as when plastic bags end up tangled in sorting screens and conveyor belts.

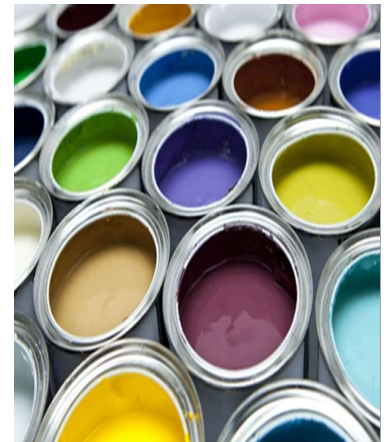


Household Hazardous Waste

What is **HHW**?

HHW are wastes produced in the household that could be chemically or physically characterized as hazardous.

However, HHW is not regulated as hazardous waste under federal or state laws.



How to Identify **HHW** & Examples

- ☠ Corrosives (drain and rust cleaners)
- ☠ Flammables (gasoline, oil-based paint)
- ☠ Toxic Materials (poisons, pesticides)
- ☠ Oxidizers (pool chemicals)
- ☠ Air Quality Hazards (VOCs, batteries)
- ☠ Wildlife Hazards (DDT, chlordane)
- ☠ Unknowns (self-explanatory)







What can YOU do about HHW?

#1 – Avoid creating it.

#2 – Select the least toxic products.

#3 – Buy only what you need; don't stockpile.

#4 – Give it away/donate if it's usable!

Let's talk trash...



Trash, otherwise known as municipal waste

Any **garbage**, refuse, industrial lunchroom or office waste and other material, including solid, liquid, semisolid or contained gaseous material, resulting from operation of residential, municipal, commercial or institutional establishments and from community activities and any sludge not meeting the definition of residual or hazardous waste in the Solid Waste Management Act from a municipal, commercial or institutional water supply treatment plant, wastewater treatment plant or air pollution control facility.



Where does all of
Dauphin County's trash go?



Susquehanna Resource Management Complex

Home to the country's first waste-to-energy (WTE) facility, the Susquehanna Resource Management Complex (SRMC) offers an environmentally safe and sustainable means for disposing of waste while also generating clean, renewable energy. In fact, the electricity generated during the WTE process is used to power nearby State Capitol Buildings.

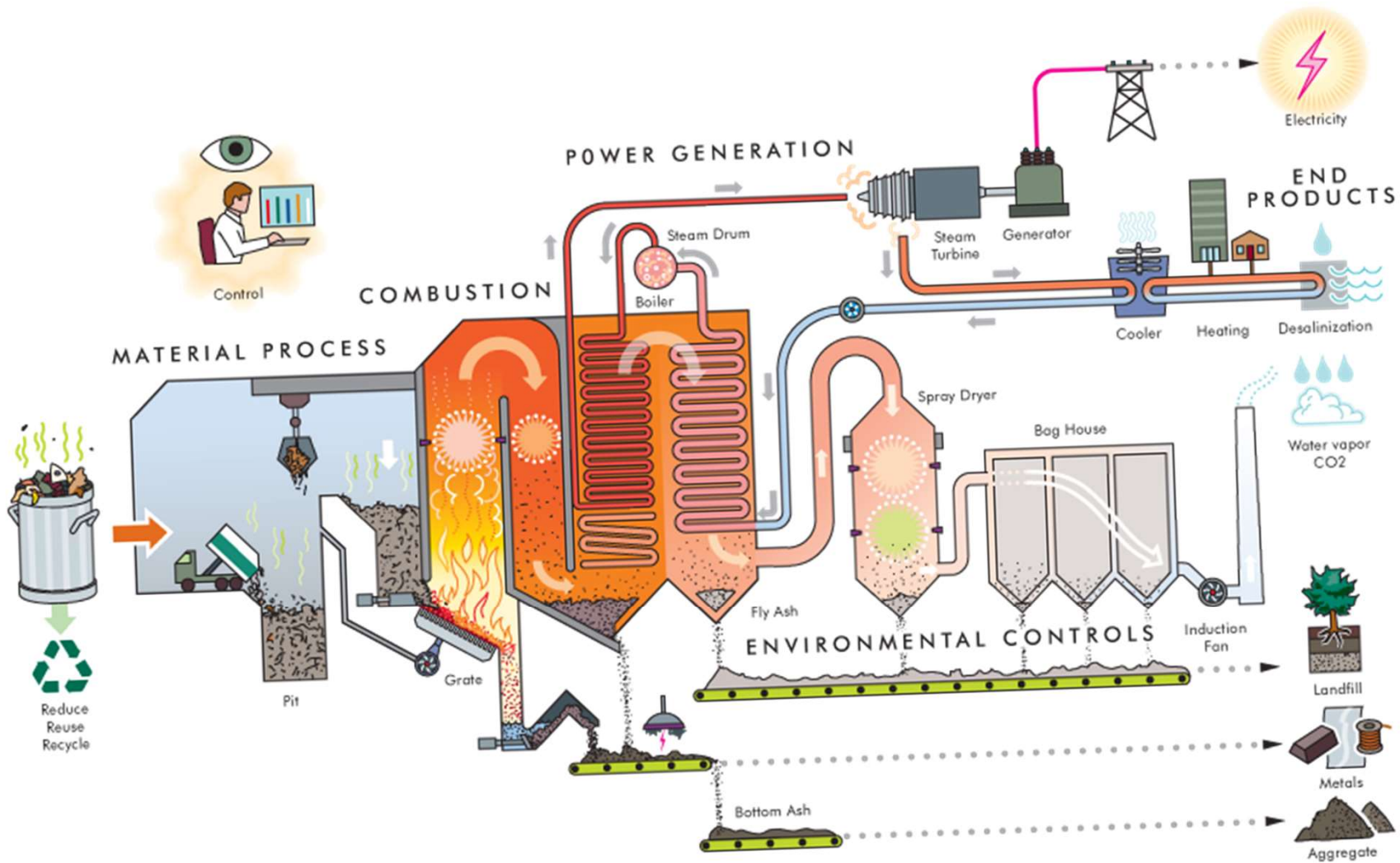
Info Source: LCSWMA.ORG



What is waste-to-energy?



Waste-to-energy means the incineration process whereby waste is converted into thermal energy to generate steam that drives turbines for electricity generation.



General Consideration

**When in doubt...
throw it out!**

As suggested by PADEP guidance:

If you're not sure something is recyclable, the best choice is to throw it in the trash. This eliminates potential contamination of recyclable materials, which could cause a much greater increase in unnecessary waste than just trashing your borderline item.

.....
.....

However,
please don't
throw it out
on the
ground or
illegally
dump your
unwanted
trash.



Illegal Dumping & Littering

Illegal dumping and littering is everyone's problem. The environmental impacts of illegal dumping and littering damage our land, water, soil, and creates air pollution all the while fostering an unsafe space in our communities.





WHAT IS ILLEGAL DUMPING?

Illegal dumping is the disposal of solid waste (i.e.. trash, rubbish, garbage) at a site other than a permitted disposal facility, such as a waste-to-energy facility, landfill or transfer station.



WHAT IS LITTERING?

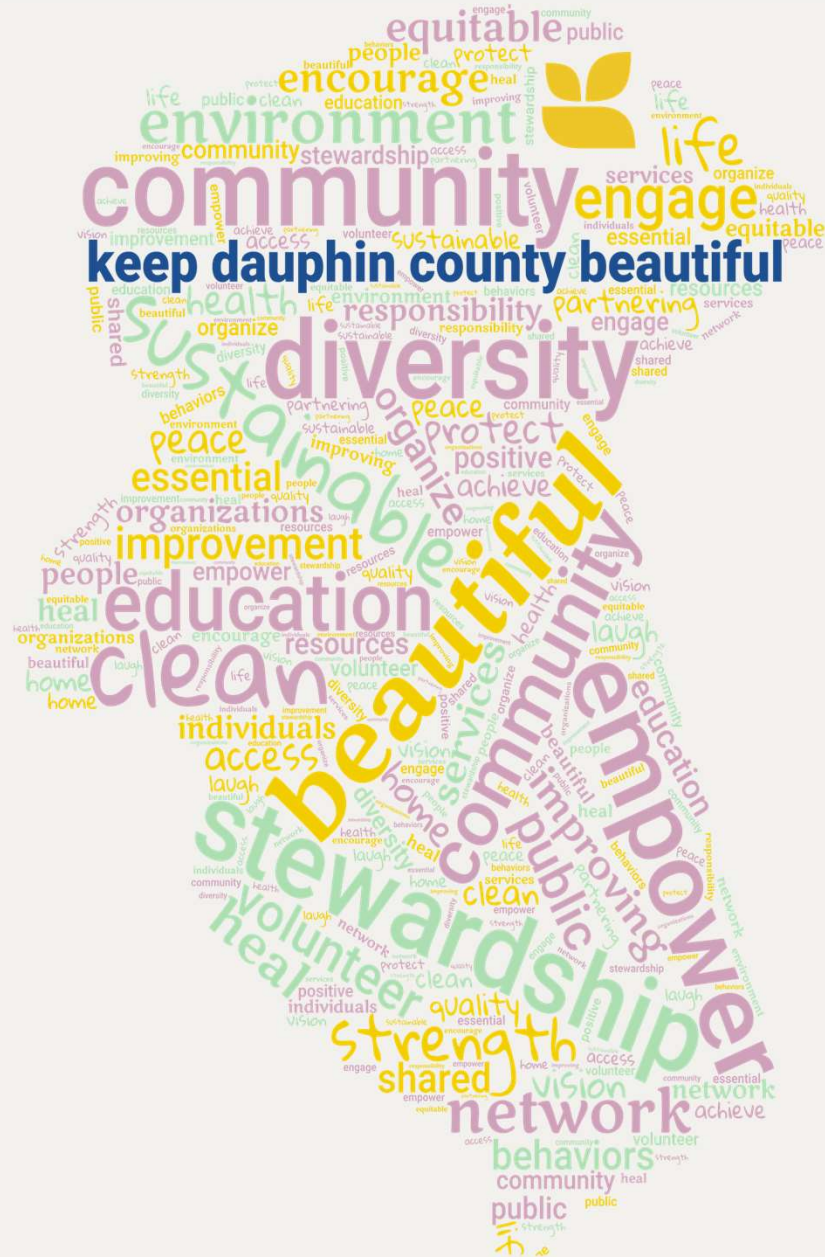
Littering is knowingly discarding trash/material on any public or private property or any public or private waters, without permission to do so. Litter is trash improperly placed so as to be a nuisance or health concern.



WHAT ARE WE DOING ABOUT IT?

The Board of Commissioners adopted Ordinance #6-2004 prohibiting the disposal or dumping of municipal waste in or at the County's Recycling Drop-Off Centers or on any private or public properties within the county.

The County has experienced illegal dumping and littering countywide; ranging from the Capital Area Greenbelt, to the valley's, to back yards and at several of the Recycling Drop-Off Centers.



**Keep
Dauphin County
Beautiful**

KEEP PENNSYLVANIA BEAUTIFUL AFFILIATE

In 2023, Dauphin County became an affiliate of Keep Pennsylvania Beautiful. Being an affiliate grants us access to resources to help combat littering and illegal dumping, sponsor beautification projects, and, overall, help keep Dauphin County a beautiful place to live.





Get involved!

Please contact our office if you see illegal dumping and an Environmental Enforcement Officer will investigate.

Dauphin County Illegal Dumping Hotline:
717-255-2677

Report on the County's website:
DauphinCounty.gov

Email: illegaldumping@dauphincounty.gov

**Pete Baltimore, Enforcement Officer -
City of Harrisburg**

**Charles Miller, Enforcement Officer -
Countywide**

Report Illegal Dumping

If you do not provide sufficient details and evidence (i.e. address, photos, video, license plate number, etc.) to begin an illegal dumping investigation, our Enforcement Officers cannot investigate the incident. Please provide as much information as possible.

WHO

Did you personally observe the dumping incident?

- Yes
- No

Do you know the illegal dumping suspects?

- Yes
- No

If yes, please provide the suspect's name(s):

Do you know where the suspect lives or where the discarded items came from?

- Yes
- No

Describe the suspect(s) and include any identifying information (ethnicity, gender, height, weight, hair color, clothing, shoes, etc.):

Please describe the suspect's vehicle:

License Plate Number:

Search

ILLEGAL DUMPING

Report Illegal Dumping

FIND A DEPARTMENT

PUBLICLY ELECTED OFFICIALS ▾

COURT DEPARTMENTS ▾

COURTS ▾

HUMAN SERVICES ▾

PARKS AND RECREATION ▾

DEPARTMENT DIRECTORY ▾

Area Agency on Aging

Budget & Finance

Children and Youth

Community and Economic Development

Conservation District

Cooperative Extension

Criminal Investigation Division

Dauphin County Planning Commission

Drugs & Alcohol Services

